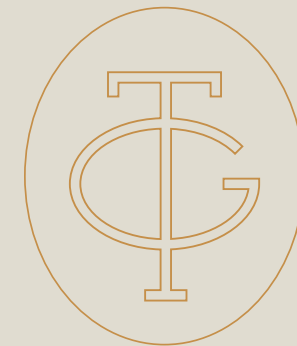




THE GILD

FITZROY ST

ST KILDA



THE GILD



A RETURN TO COASTAL GRANDEUR

THE DESIGN

THE GILD

FITZROY ST

ST KILDA



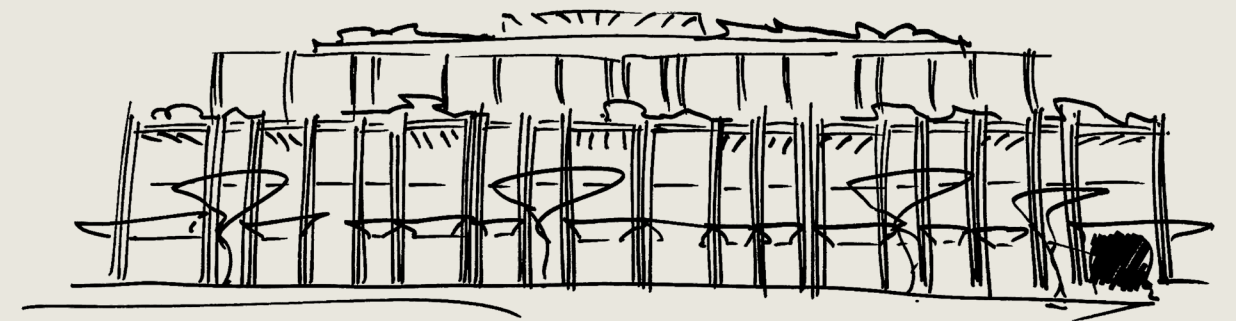
Artist's Impression



Telha Clarke Project Team, The George Ballroom

“Every detail at The Gild reflects a dialogue between past and present. We drew on St Kilda’s storied character to shape grounded yet timeless homes, layered with restorative wellness spaces, tranquil garden escapes, and a rooftop retreat that frames the city and bay in changing light.”

TIM CLARKE
DIRECTOR, TELHA CLARKE



Melbourne-based Architecture and Interior Design studio Telha Clarke brings extensive experience in multi-residential and hospitality design to The Gild. Known for refined, context-driven architecture, the studio has shaped spaces that balance timeless elegance with contemporary living, an approach that underpins every detail of this bayside sanctuary.

The Gild's architecture is a study in contrasts: ornate yet restrained, nostalgic yet progressive. Inspired by St Kilda's post-war mansions and the elegance of the European Riviera, its façade combines solid forms with lush greenery to soften the urban edge. Scalloped detailing along the pergola structure and perforated metal screens introduce texture while allowing light and air to permeate the residences. A private and secure entrance completes this layered composition, offering a quiet prelude to the homes beyond.





Artist's Impression

THE ART ON ARRIVAL



ALEX WALKER,
ARTIST OF THE GILD'S GLASS CANOPY INSTALLATION

The Gild brings Fitzroy Street's story of transformation into the present through a striking glass canopy by Melbourne artist Alex Walker. Known for her exploration of light and perception using analogue photographic techniques, Walker transforms the building's entrance into an experience of colour and movement. Her work reinterprets the idea of 'drawing with light', casting dynamic reflections on the footpath below and inviting residents and visitors to pause, look upward, and consider both what has been and what lies ahead.

Part sculpture, part architecture, the installation animates The Gild's façade with shifting hues. Walker's artistic vision reimagines a functional canopy into a living artwork that connects the building to its vibrant streetscape.





Artist's Impression

THE AMENITIES

The Gild's shared spaces are conceived as sanctuaries of calm, where a private dining room invites slow, considered gatherings, a garden retreat offers moments of stillness and serenity, and wellness zones like the sauna and yoga studio restore balance to the everyday. The result is a series of composed, purposeful spaces beyond the primary residence, unified by the understated refinement that defines The Gild.



Artist's Impression





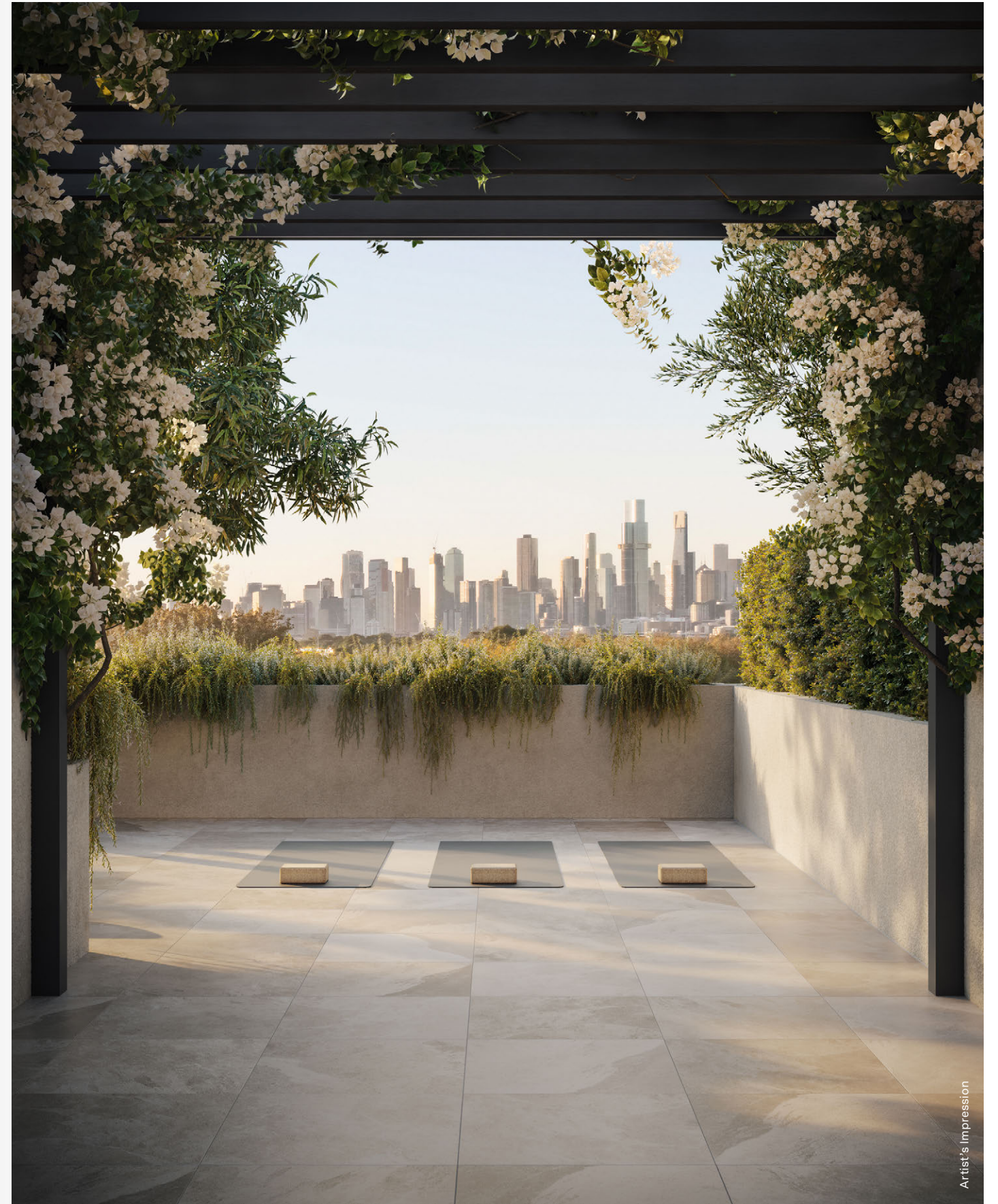
Florian Wild Project Team, St Kilda Botanical Gardens

“We imagined the landscaping as a series of scenes, where lush greenery flows through the residents’ garden and sculptural planting accents the rooftop bay views. Inspired by St Kilda’s coastal rhythm, every detail is designed to catch the light and create moments of tranquility.”

RUPERT BAYNES-WILLIAMS
DIRECTOR, FLORIAN WILD

Drawing on St Kilda’s layered character, Florian Wild has imagined landscapes that feel immersive and alive. The Melbourne-based studio utilises textural planting and seasonal colours to create a sense of calm from outside in. Landscaping is thoughtfully composed to enhance outdoor usability, framing skylines without obstruction, while remaining central to both the architectural expression and the outdoor experience. At The Gild, this sensibility extends to the rooftop, where clever planting selections enrich the daily experience for residents.





THE ROOFTOP

The Gild's wellness philosophy rises to the rooftop: an escape above it all where leisure unfolds against a cinematic horizon. Sunrise yoga beneath an endless sky by dawn; effortless entertaining by evening. With sweeping coastal and city vistas, this elevated setting is designed for quiet rituals, intimate soirées, and golden-hour indulgence.



Artist's Impression



Disclaimer: This document was produced prior to obtaining all necessary planning and other approvals and prior to completion of construction. The information contained in this document is indicative and intended as a guide only. All photographs, images, plans, illustrations and artists impressions depicting façade elements, dimensions, floor layouts, levels, designs, diagrams, structures, configurations, areas, fittings, finishes, car parking spaces, landscaping, views and specifications are illustrative, approximate only and subject to change without notice. The furniture and other inclusions depicted are not included with any sale or lease. No warranty, express or implied, is given to the accuracy of the information in this document. Prospective purchasers, tenants and other interested parties must make and only rely on their own assessments and seek their own professional advice in all respects. Each member of the Pallas Group of companies and their directors, officers, employees, representatives, agents and advisers expressly disclaim any liability which may arise from relying on or any use of the contents of this publication or otherwise in connection with this publication. ©Pallas 2026. All rights reserved.

Fortis